

THE FINEST HOMES, TRAVEL AND LIFESTYLE Vol 26 No 3

# INTERNATIONAL PROPERTY

*& Travel*

PLUS

London's  
newest  
developments

- Supercars
- Watches
- Hotels & Resorts
- Jewellery
- Art Exhibitions
- Bedroom Interior Design
- Garden & Poolside  
Furniture
- Super Yacht Charters

## Sunshine HOMES

IN COSTA DEL SOL  
GIBRALTAR  
& PANAMA

£12





## Timeless elegance

KATHARINE POOLEY, founder of Katharine Pooley London

There are several key design details to consider when putting together a master bedroom scheme. A master suite unlike a guest suite must be luxurious, inviting, personal, comfortable and timelessly elegant. To achieve this, I prefer neutral colour schemes with a peaceful, serene and soft tone. Accents of dove grey, soft celadon blues or dusky pinks work well with layered neutrals and I return to these colours again and again for master bedrooms.

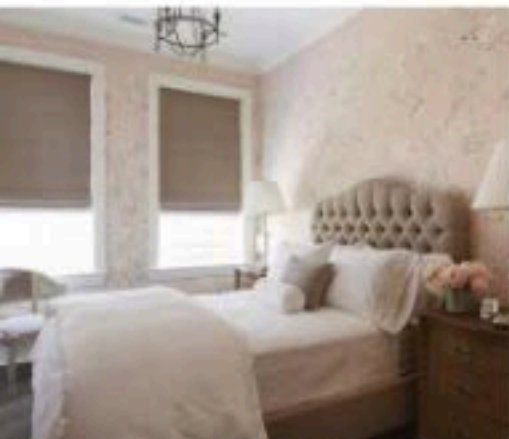
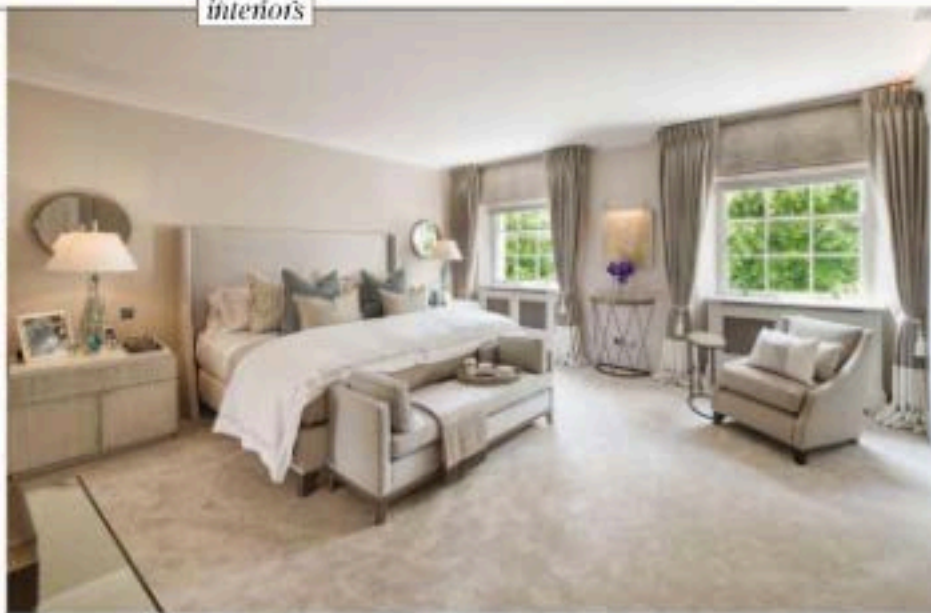
I like to add interest with bespoke bedside tables; for one property in London I used selenite crystal on

the drawer fronts. I find organic semi-precious textures look incredible when mixed with luxurious natural fabrics like lamb's wool, cashmere, linen and silk - perfect for a tactile layered scheme. Interesting table lamps are always a must - twisted crystal lamps from Nicholas Haslam are a favourite or Ralph Lauren has some beautiful crystal and metal designs.

Finally, a master bedroom should have personal touches; dressing tables

with mother of pearl and silver shell bowls for earrings, family photographs in shagreen frames, desks with bespoke leather writing sets, artwork reflecting the client's tastes and of course scented candles, flowers, bespoke bed linen and the softest cashmere throws. All these details make a master suite properly luxurious, inviting and a peaceful retreat for busy lives.

► [www.katharinepooley.com](http://www.katharinepooley.com)



## Functional and comfortable

LONNI PAUL, founder of Lonni Paul Design

I always start with function, but I will never sacrifice comfort. I think it's important to include a sitting area for reading with a table for coffee in the morning - near a window is always nice for natural light.

Bedding is also very important, especially a down comforter in the right weight, with pillows in firm, medium and soft options. Cashmere and high thread count Egyptian cotton for materials. For soft furnishings and accents, I love a down mattress topper and a chaise lounge.

Bedside tables on each side of the bed that are high enough to easily reach your bedside essentials are a sign of good design. There should be a seating arrangement at the end of the bed, or to the side. If it's to the side, a bench is essential at the end of the bed.

A plush rug makes the space feel cosy - but it needs to be large enough to span the entire bed on all sides. I also love a TV that is disguised as art! As for colours, choose soft pale blues, silvers, greys, whites, creams and lavender. These all soothe and help the bedroom feel like a haven for rest. ■

► [www.lonnipaul.com](http://www.lonnipaul.com)

